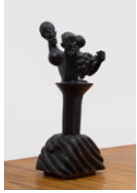


Works On View

Mickael Marman,
Emmanuel Louisnord Desir,
and Cici Wu

September 4–September 14, 2024

gallery 1:



Emmanuel Louisnord Desir

Family Business, 2024

wood

66 × 26 × 26 in (167.64 × 66.04 × 66.04 cm)



Mickael Marman

untitled, 2024

oil, spray paint, acrylic, and newspaper on burlap

15 $\frac{3}{4}$ × 19 $\frac{5}{8}$ (40 × 50 cm)



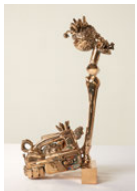
Cici Wu

Lovers Revolt, Lovers Resolve (Reincarnations of Lantern), 2020

mineral pigments, glue, rice paper, ink

17 $\frac{1}{2}$ × 24 $\frac{1}{2}$ in (44.45 × 62.23 cm)

gallery 2:

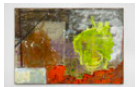


Emmanuel Louisnord Desir

Crash Out Baby, 2024

bronze

28 $\frac{1}{4}$ × 12 $\frac{1}{4}$ × 8 in (71.76 × 31.12 × 20.32 cm)



Mickael Marman

18th November, 2023

oil, spray paint, acrylic, enamel, sand and newspaper on linen, artist frame

55 $\frac{1}{8}$ × 74 $\frac{3}{4}$ × 1 $\frac{1}{8}$ in (140 × 190 × 3 cm)

gallery 2 (continued):



Mickael Marman

12th January, 2024

oil, spray paint, acrylic, enamel, sand, and newspaper on linen, artist frame
55 1/8 x 74 3/4 x 1 1/8 in (140 x 190 x 3 cm)



Cici Wu

Moon Rabbit, 2023

mineral pigment, ink, glue, rice paper
54 x 27 in (137.16 x 68.58 cm)

showroom:



Emmanuel Louisnord Desir

Castles of Sand Drift Into the Sea Eventually, 2024

oil on wood panel
48 x 96 x 4 in (121.92 x 243.84 x 10.16 cm)



Emmanuel Louisnord Desir

A La Mode, 2024

oil on wood panel
48 x 96 x 4 in (121.92 x 243.84 x 10.16 cm)