

**G. Peter Jemison**

*On The Right Path*

*Works: 1982–2023*

November 17, 2023–January 27, 2024

front gallery:



*Wenitsyoh II, 2008*  
acrylic on canvas  
84 × 71 in (213.36 × 180.34 cm)



*Clouds over Texas, 1985*  
egg tempera and acrylic on pulp paper  
30  $\frac{3}{8}$  × 41 in (77.15 × 104.14 cm)  
34 × 44 × 2  $\frac{1}{4}$  in (86.36 × 111.76 × 5.72 cm) (framed)



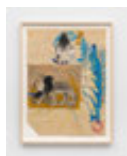
*Indigenous Victims, 1982*  
acrylic on linen  
56 × 48 in (142.24 × 121.92 cm)



*Summer Strike, 2002*  
acrylic on cotton printing paper  
22  $\frac{1}{8}$  × 35 in (56.20 × 88.90 cm)  
25  $\frac{3}{4}$  × 38  $\frac{5}{8}$  × 1  $\frac{1}{2}$  in (65.41 × 98.11 × 3.81 cm) (framed)



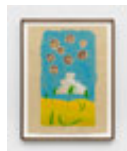
*Turtle and Bison, 1983*  
acrylic, oil pastel, and beads on burlap  
41  $\frac{1}{2}$  × 63  $\frac{1}{4}$  × 1 in (105.41 × 160.66 × 2.54 cm)



*Coyote and Raven Party, 1982*  
mixed media on paper bag  
30  $\frac{1}{4}$  × 22  $\frac{1}{4}$  in (76.84 × 56.52 cm)  
33  $\frac{7}{8}$  × 25  $\frac{7}{8}$  × 1  $\frac{1}{2}$  in (86.04 × 65.72 × 3.81 cm) (framed)



*Fox Trot, 2001*  
mixed media on paper  
19  $\frac{7}{8}$  × 26 in (50.48 × 66.04 cm)  
23  $\frac{1}{8}$  × 29  $\frac{1}{4}$  × 1  $\frac{1}{2}$  in (58.74 × 74.30 × 3.81 cm) (framed)



*Moon of the First Blackberry, c. 2012*  
acrylic and blackberry juice on paper  
30  $\frac{1}{4}$  × 22  $\frac{1}{2}$  in (76.84 × 57.15 cm)  
33  $\frac{7}{8}$  × 26  $\frac{1}{8}$  × 1  $\frac{1}{2}$  in (86.04 × 66.36 × 3.81 cm) (framed)

front gallery: (continued)



*Yaikneh (Strawberry Moon)*, 1985  
egg tempera, embossed paper pulp, and feathers on craft paper  
30 ¼ × 40 ½ in (76.84 × 102.87 cm)  
33 ⅞ × 44 ⅛ × 1 ½ in (86.04 × 112.08 × 3.81 cm) (framed)



*Bare Hill*, 1987  
lithograph  
18 ¼ × 24 ¼ in (46.36 × 61.60 cm)  
21 ½ × 27 ½ × 1 ½ in (54.61 × 69.85 × 3.81 cm) (framed)



*Bare Hill Serpent*, 1983  
mixed media on paper  
20 × 26 ⅞ in (50.80 × 66.36 cm)  
23 ¼ × 29 ⅜ × 1 ½ in (59.06 × 74.61 × 3.81 cm) (framed)



*Gourd Dancer*, 1999  
mixed media on bag  
17 × 11 ½ × 7 in (43.18 × 29.21 × 17.78 cm)

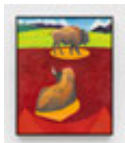


*Orenda (AaTmn!)*, 2012  
mixed media on brown paper bag  
12 × 6 × 4 in (30.48 × 15.24 × 10.16 cm)



*Christmas Cactus*, 2001  
mixed media on paper bag  
16 ½ × 11 ½ × 7 in (41.91 × 29.21 × 17.78 cm)

middle gallery:



*Buffalo Road*, 1985  
oil, acrylic, and egg tempera on canvas  
52 ½ × 41 in (133.35 × 104.14 cm) (framed)



*Rez Dogs*, c. 2010  
graphite on paper  
20 ¼ × 28 in (51.44 × 71.12 cm)  
23 ½ × 31 ¼ × 1 ½ in (59.69 × 79.38 × 3.81 cm) (framed)

back gallery:



*School House, 2012*  
acrylic on canvas  
48 x 36 in (121.92 x 91.44 cm)



*Route 17 Blockade, 1992*  
mixed media collage on paper  
22 x 21 1/8 in (55.88 x 53.66 cm)  
25 1/4 x 24 3/8 x 1 1/2 in (64.14 x 61.91 x 3.81 cm) (framed)



*White Rose, 2001*  
acrylic on handmade paper  
23 5/8 x 32 1/8 in (60.01 x 81.60 cm)  
27 1/4 x 35 3/4 x 1 1/2 in (69.22 x 90.81 x 3.81 cm) (framed)



*Raptor, 1989-90*  
egg tempera on handmade paper  
19 3/4 x 14 3/4 in (50.17 x 37.47 cm)  
22 5/8 x 17 5/8 x 1 3/8 in (57.47 x 44.77 x 3.49 cm) (framed)



*Squash Blossom, 2017*  
mixed media on canvas with shrinking cloth technique  
20 x 20 in (50.80 x 50.80 cm)



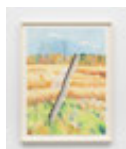
*Shadow Bend, 2003*  
colored pencil on paper  
26 x 19 3/4 in (66.04 x 50.17 cm)  
29 1/4 x 23 x 1 1/2 in (74.30 x 58.42 x 3.81 cm) (framed)



*Second Ave & 11th, 1984*  
acrylic, fur, and fencing on paper  
23 1/4 x 31 5/8 in (59.06 x 80.33 cm)  
26 7/8 x 35 1/4 x 2 1/8 in (68.26 x 89.54 x 5.40 cm) (framed)



*Blackberry Vines, 2003*  
colored pencil and ink on paper  
19 5/8 x 27 5/8 in (49.85 x 70.17 cm)  
23 1/4 x 31 1/4 x 1 1/2 in (59.06 x 79.38 x 3.81 cm) (framed)



*Old Post, 2016*  
acrylic and ink with colored pencil on paper  
30 1/8 x 22 1/2 in (76.52 x 57.15 cm)  
33 3/4 x 26 1/8 x 1 1/2 in (85.73 x 66.36 x 3.81 cm) (framed)

back gallery: (continued)



*Popcorn*, 1980  
oil pastel on paper bag  
18 ½ × 15 in (46.99 × 38.10 cm)  
21 ¾ × 17 ⅞ × 1 ¾ in (54.29 × 45.40 × 3.49 cm) (framed)



*Onondowagah Territory*, 2003  
acrylic on paper  
23 ⅞ × 30 ⅜ in (58.74 × 77.15 cm)  
26 ¾ × 34 × 1 ½ in (67.95 × 86.36 × 3.81 cm) (framed)



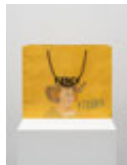
*Natural & Disaster*, 2023  
acrylic and ink on canvas  
36 × 47 ¾ × 4 in (91.44 × 121.29 × 10.16 cm)



*Erie Canal Impact on the Hodinoshoni*, 2022  
acrylic, tile, barb wire, and collage on plastic  
33 × 48 in (83.82 × 121.92 cm)

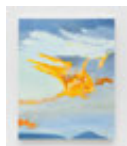


*Braves*, 1992  
mixed media on bag  
14 × 8 ¾ × 5 ½ in (35.56 × 22.23 × 13.97 cm)



*Revoke Papal Bulls*, 2022  
colored pencil on Fendi bag  
19 ½ × 24 ¼ × 8 in (49.53 × 61.60 × 20.32 cm)

office:



*Sun Over Nundawaoh*, 2023  
oil on canvas  
30 × 24 in (76.20 × 60.96 cm)